

Designed to improve academic English; for undergraduate university students. Available across a range of devices, allowing for seamless mobile study.

What it is

The Reallyenglish Academic Course is for undergraduate university students at B1 level (TOEIC®* 550-785). It will benefit students who need to improve their English for their current courses, students who are preparing to study overseas or in English-medium university classes, and students who are trying to achieve better results in international standardized tests such as TOEFL or IELTS.

What it provides

Improvements in listening and reading efficiency; improvements in ability and confidence to understand academic English, leading to improved international test scores for university students who are willing to study 30 hours over 3-6 months.

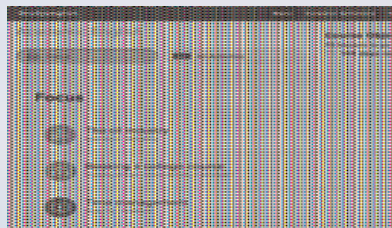
Key course features include:

- 30 one-hour lessons: 15 listening and 15 reading
- High-frequency academic words from the Academic Word List
- 15 informative videos offering tips on how to stay motivated and be successful in an English-medium academic environment
- Detailed explanations for all questions in all activities
- Immediate feedback on performance
- Seamless integration across devices: computers, mobile phones, and tablets

How it works

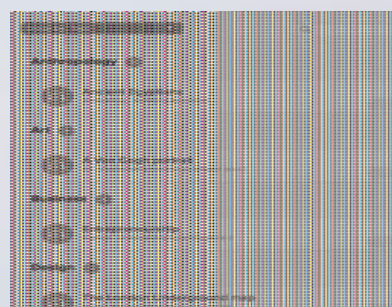
Step 1

Focus shows you the first three activities you need to study and the order in which to help you make the fastest progress, then suggests the next three lessons upon completion.



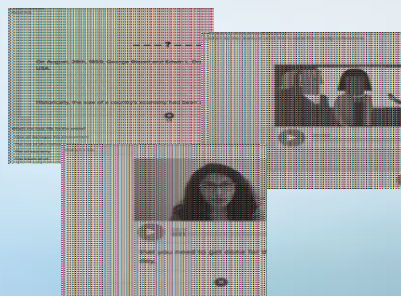
Step 2

You can also select lessons by topic and type (reading, listening, video) from the All Activities tab.



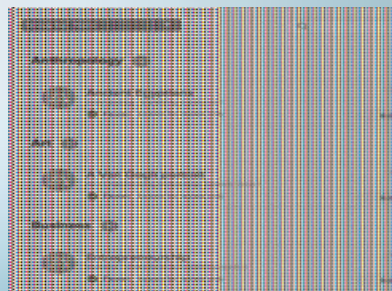
Step 3

Start studying. Each reading or listening lesson is divided into 3 x 20 minute sections. Take the sections in order as each one builds on skills and language from the previous section.



Step 4

Finish the course by passing enough lessons.



Step 5

Print certificate as proof of successfully completing the course!

* TOEIC is a registered trademark of Educational Testing Service (ETS). This product is not endorsed or approved by ETS.